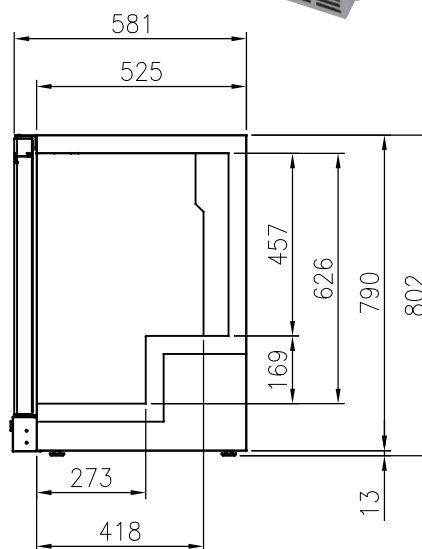
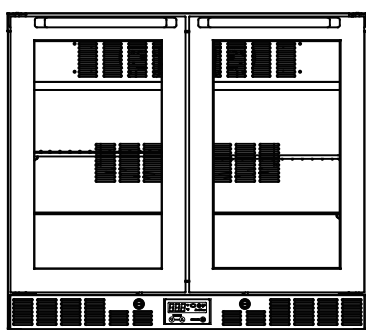
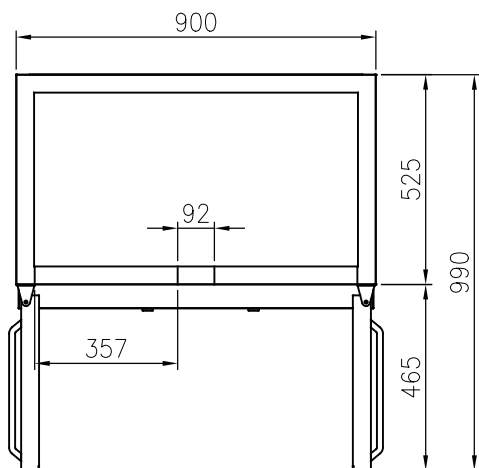


REAR MOUNT BACK BAR

FSB-900R



FEATURES

- Auto-closing doors&Stopper
- Magnetic door gasket
- Extra-large internal capacity
- Front breathing
- Tempered glass
- Digital temperature control & monitor system
- LED lighting interior
- Fully stainless steel finished cabinet
- PE coated sturdy wire shelves

TEMPERATURE

0°C ~ 10°C

OPTIONAL MODELS

- Leg model
- Caster models

Model	Capacity (ℓ)	Exterior Dimension (mm)			Net Weight (kg)	Gross Weight (kg)	Amps	Power Supply	Voltage (V/Hz/Ø)	Watt	HP	Refrigerant	No. Door
		W	D	H									
FSB-900R	169	900	581	802	70	75	3.0	10A	240/50/1	340	1/3	R134a	2

* Design and specifications subject to change without notice

* Actual shipping weight may differ due to extra packing materials for product protection.