

# TOP MOUNT UPRIGHT

UPRIGHT



KTM-25RS1  
KTM-25FS1



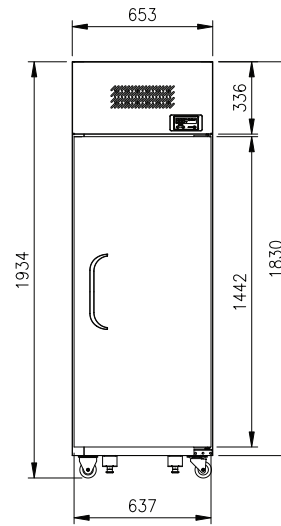
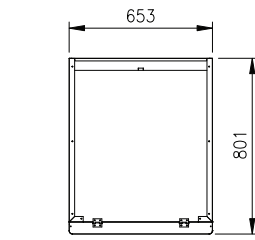
KTM-45RS2  
KTM-45FS2



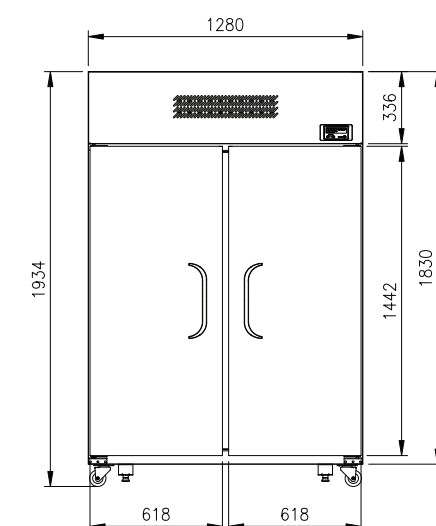
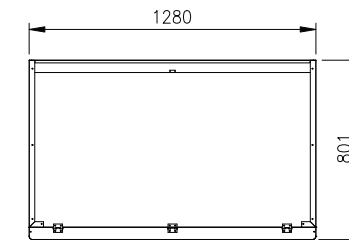
KTM-25RS2  
KTM-25FS2



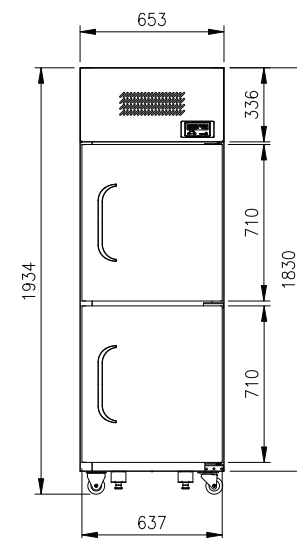
KTM-45RS4  
KTM-45FS4



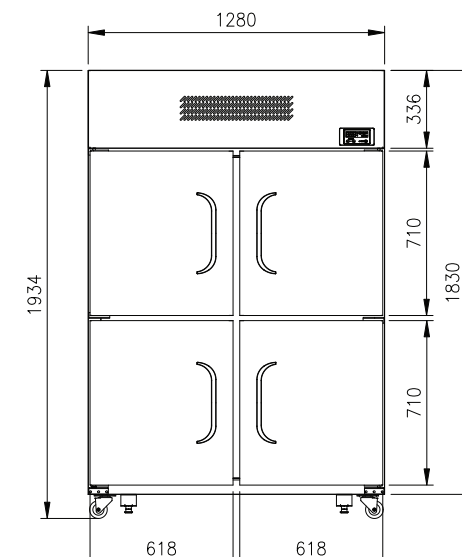
KTM-25RS1 / KTM-25FS1



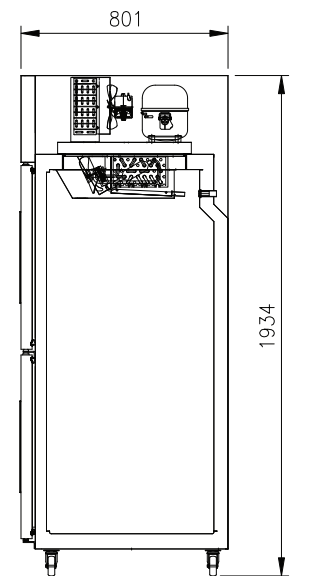
KTM-45RS2 / KTM-45FS2



KTM-25RS2 / KTM-25FS2



KTM-45RS4 / KTM-45FS4



\*The heights include the caster (104mm) \*D: Defrost

## FEATURES

- Auto-closing doors & stopper
- Door pressure release device
- Magnetic door gasket
- Door sensor with magnetic switch
- Door locks
- Extra-large internal capacity

- Digital temperature control & monitor system
- 3" casters (brakes at front)
- LED lighting interior
- Stainless steel finished top, front, sides and doors
- PE coated sturdy wire shelves

## TEMPERATURE

- Fridge: 0°C~5°C
- Freezer: -18°C

## OPTIONAL MODELS

- Left hinged model (door reverse) (\*only 25RS1/25FS1)
- GN pan compatible model

Model	Capacity (ℓ)		Exterior Dimension (mm)			Net Weight (kg)	Power Supply	Amps	Watt	HP	Refrigerant	No. Door	Type
	Gross	Net	W	D	H								
KTM-25RS1	480	445	653	801	1,934	102	10A	3.2	380	3/8	R-134a	1	Fridge
KTM-25RS2	480	445	653	801	1,934	103	10A	3.2	380	3/8	R-134a	2	Fridge
KTM-45RS2	1,034	960	1,280	801	1,934	153	10A	4.0	400	3/8	R-134a	2	Fridge
KTM-45RS4	1,034	960	1,280	801	1,934	155	10A	4.0	400	3/8	R-134a	4	Fridge
KTM-25FS1	480	445	653	801	1,934	104	10A	4.0	400(D:550)	3/8	R-134a	1	Freezer
KTM-25FS2	480	445	653	801	1,934	105	10A	4.0	400(D:550)	3/8	R-134a	2	Freezer
KTM-45FS2	1,034	960	1,280	801	1,934	163	10A	6.0	1350(D:820)	3/4	R-404A	2	Freezer
KTM-45FS4	1,034	960	1,280	801	1,934	165	10A	6.0	1350(D:820)	3/4	R-404A	4	Freezer