

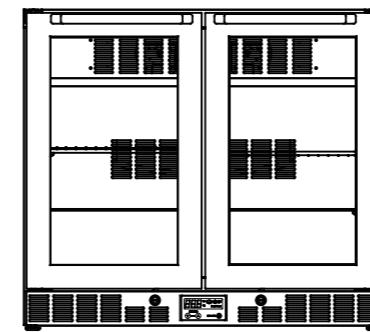
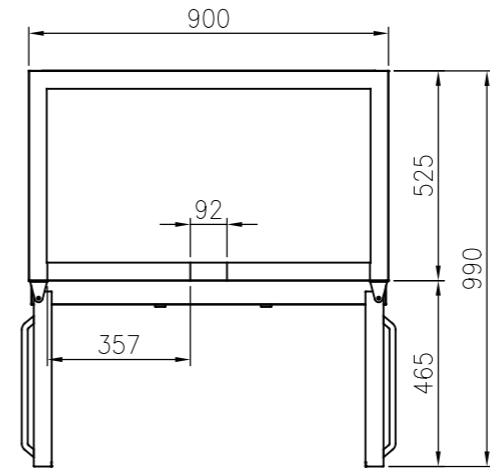
REAR MOUNT BACK BAR



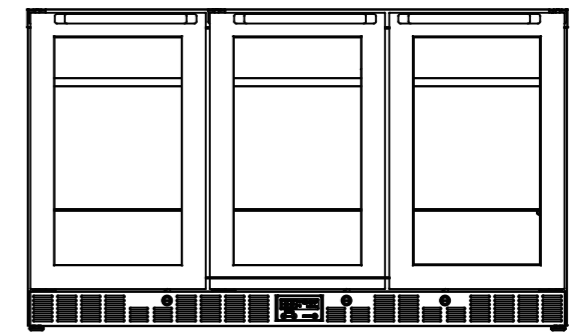
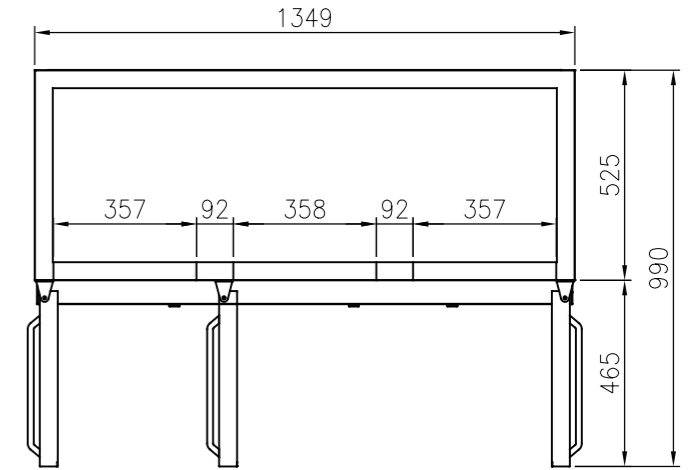
FSB-900R



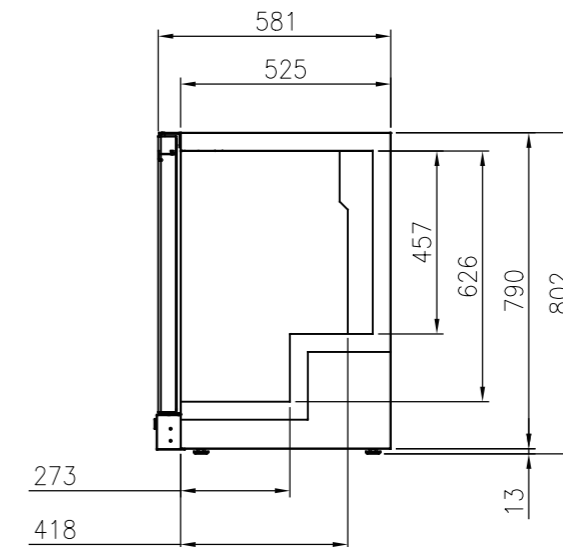
FSB-1350R



FSB-900R



FSB-1350R



FEATURES

- Auto-closing doors & Stopper
- Door pressure release device
- Magnetic door gasket
- Extra-large internal capacity
- Front breating
- Tempered glass

- Digital temperature control & monitor system
- LED lighting interior
- Fully stainless steel finished cabinet
- PE coated sturdy wire shelves

TEMPERATURE

- 0°C~5°C

OPTIONAL MODELS

- Leg model
- Caster models

| Model | Capacity (l) | Exterior Dimension (mm) | | | Net Weight (kg) | Gross Weight (kg) | Amps | Power Supply | Voltage (V/Hz/Ø) | Watt | HP | Refrigerant | No. Door |
|-----------|--------------|-------------------------|-----|-----|-----------------|-------------------|------|--------------|------------------|------|-----|-------------|----------|
| | | W | D | H | | | | | | | | | |
| FSB-900R | 169 | 900 | 581 | 802 | 70 | 75 | 3.0 | 10A | 240/50/1 | 340 | 1/3 | R134a | 2 |
| FSB-1350R | 253 | 1,349 | 581 | 802 | 97 | 105 | 3.0 | 10A | 240/50/1 | 340 | 1/3 | R134a | 3 |